



**MILES ESTATE AGENTS**

**10 Four Acre Mead Bishops Lydeard  
Taunton TA4 3NW £330,000**





A good size 3 bed detached bungalow set in good size gardens and close to the amenities of this ever popular Quantock village 6 miles North West of Taunton. Spacious lounge/dining room, kitchen with potential to re-fit, garage and parking. Immediately available with NO ONWARD CHAIN. Freehold Council Tax Band D EPC : C







## Features:

- Entrance porch
- Entrance hall
- Spacious lounge/dining room
- Good size kitchen
- 3 bedrooms
- Shower room
- Separate cloakroom
- Enclosed garden with summerhouse
- Single garage & ample parking
- NO ONWARD CHAIN
- Freehold
- Council Tax Band D
- EPC : C





# Four Acre Mead, Bishops Lydeard, Taunton, TA4

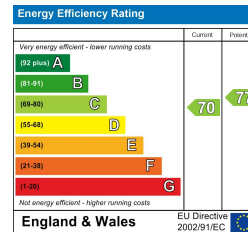
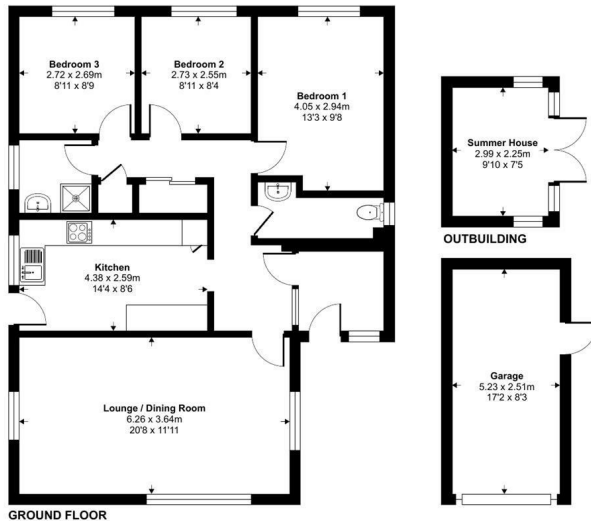
Approximate Area = 923 sq ft / 85.7 sq m

Garage = 141 sq ft / 13 sq m

Outbuilding = 72 sq ft / 6.6 sq m

Total = 1136 sq ft / 105.3 sq m

For identification only - Not to scale



Floor plan produced in accordance with RICS Property Measurement 2nd Edition, incorporating International Property Measurement Standards (IPMS2 Residential). © richcom 2025. Produced for Miles Alexander Limited T/A Miles Estate Agents. REF: 1347994



Viewings strictly through the selling agents:

**Miles Estate Agents**

2 Piffin Lane, Bishops Lydeard, Taunton, Somerset, TA4 3AS

Tel: 01823 470 500

lydeard@milesestateagents.co.uk

www.milesestateagents.co.uk



**rightmove**

**OnTheMarket.com**

**MILES ESTATE AGENTS**

